

Figure 1 - Volunteer, collecting water at 1 m depth prior to taking a temperature reading.



Figure 2 , Surface Water temperatures, August 5,6,7

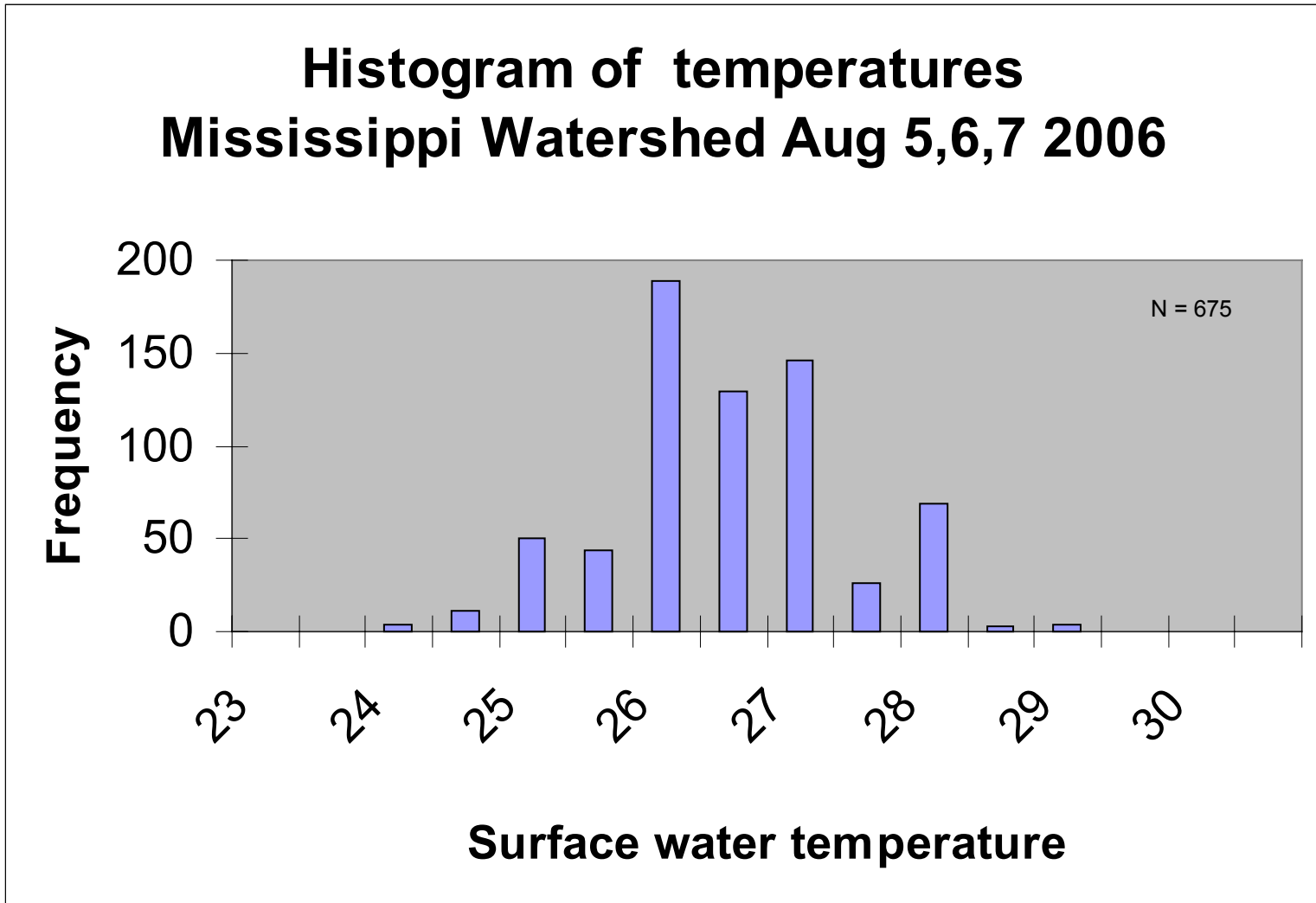


Figure 3 Water temperatures, 1m depth

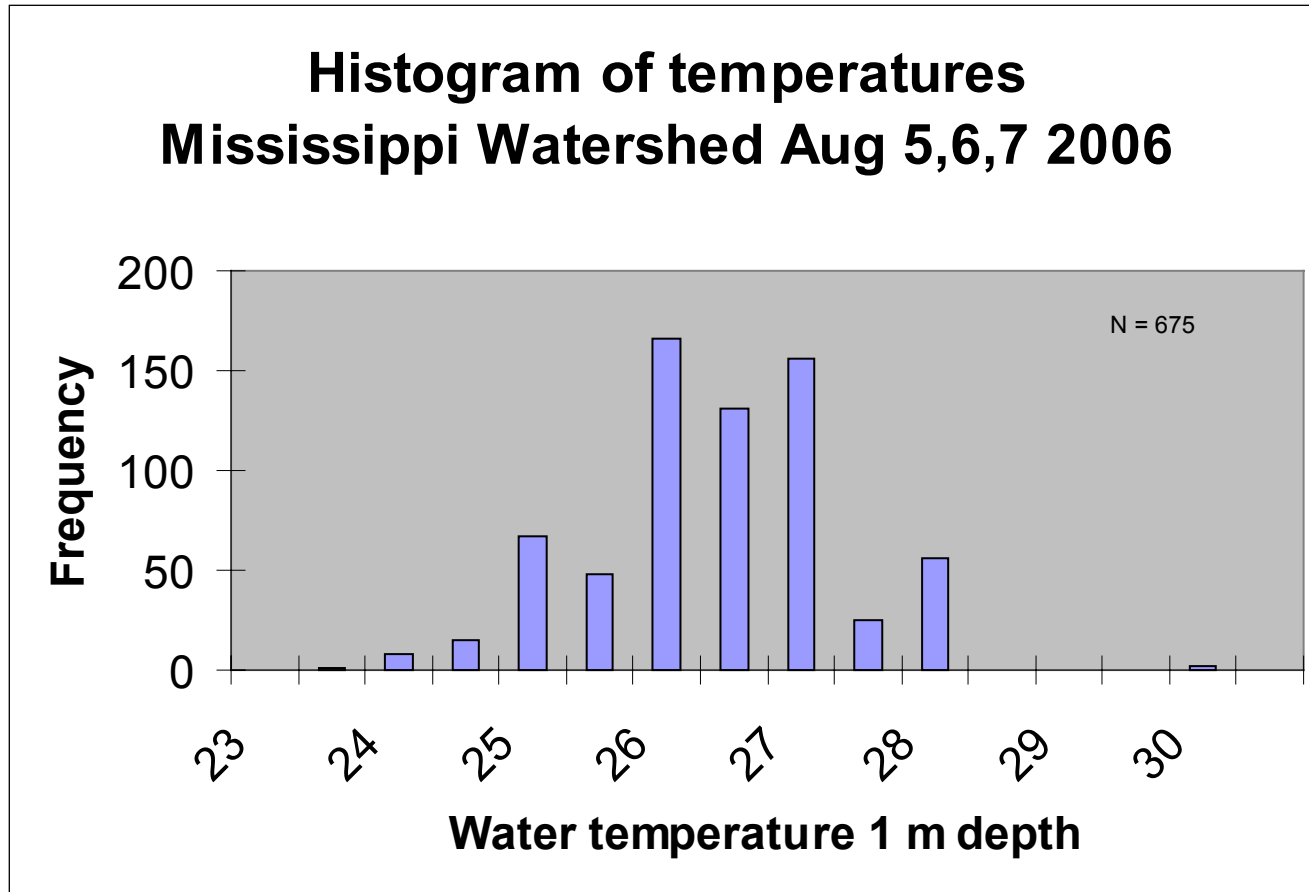


Figure 4: Temperature data, 1m depth Buckshot Lake, western Mississippi Watershed

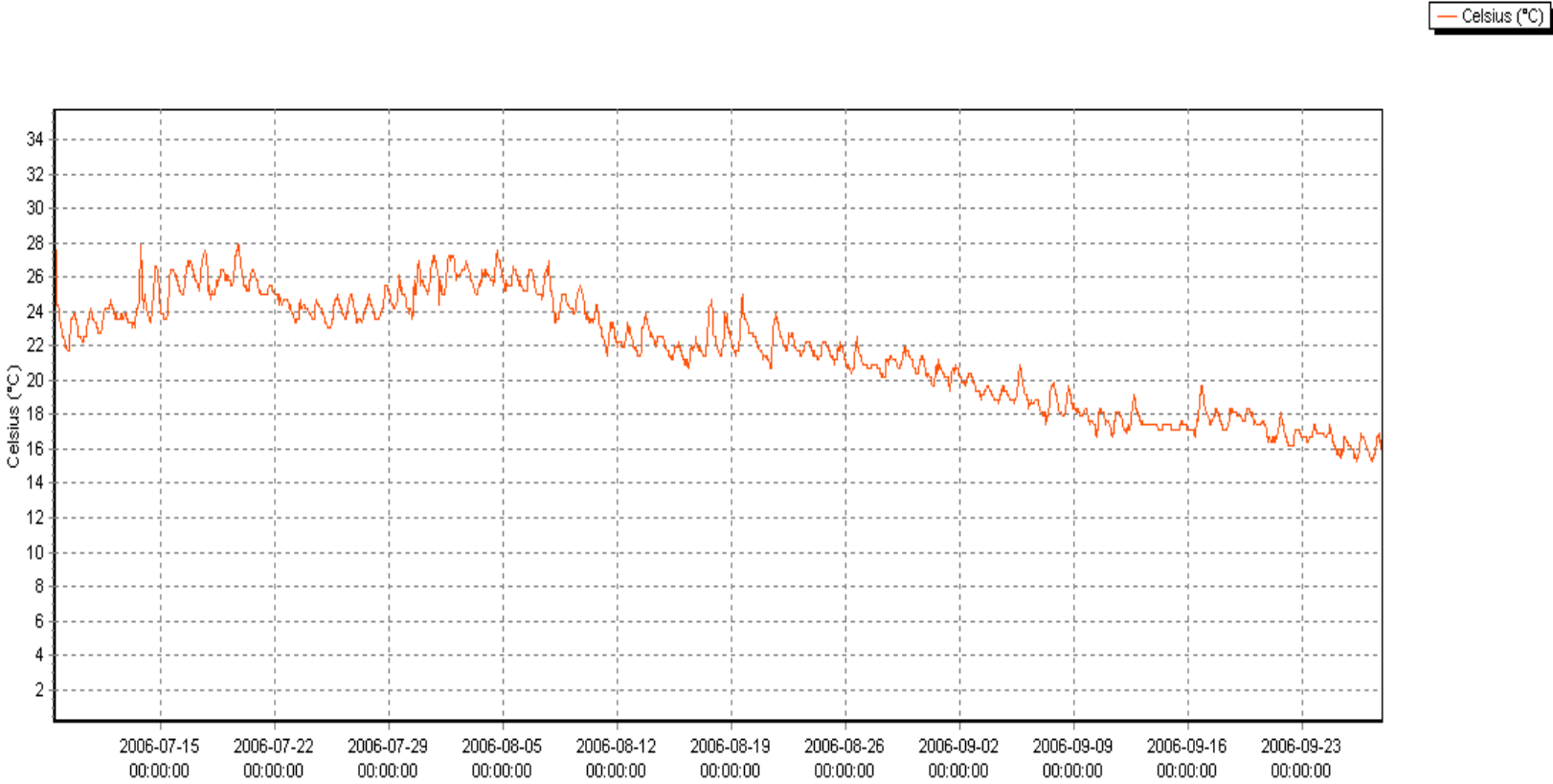


Figure 5: Temperature data 1m depth, Clayton Lake, eastern Mississippi Watershed, 2006

